

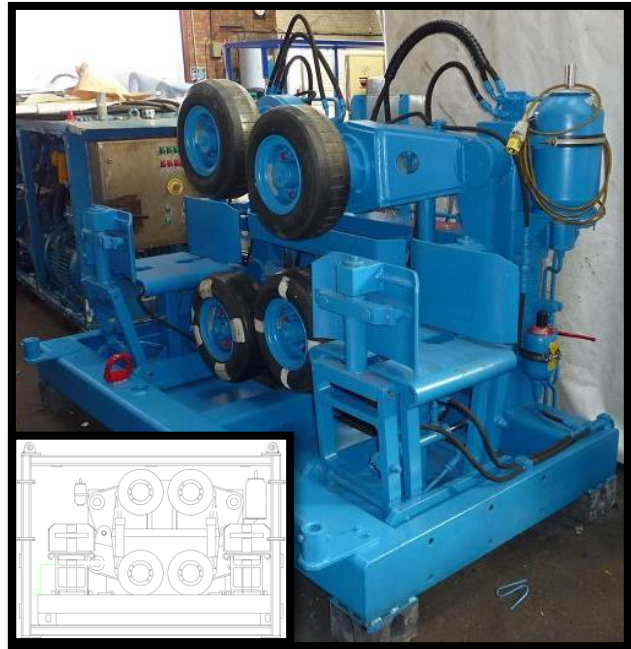
Rig 45: 2 Pair Cable Transporter

Our 2 pair cable transporter, Rig 45, is designed to be used in the transportation of cables used within such industries as the power industry and telecommunication industry. It is powered by a hydraulic powerpack and controlled with a remote ergonomically designed control desk. It is of robust design and is suitable to be operated in the most hazardous environments the industry has to offer.

Key Features:

- Maximum Dynamic Pull tension 1.4Te*;
- Max speed in excess of 3m/s;
- Suitable for cable sizes up to 300mm;
- Pass objects up to 400mm;
- Self contained control desk;
- Powered by HPU (supplied);
- Simple deck installation utilising twist-lock feet.
- In emergency, or power loss situations, the wheel pairs will automatically close and can hold the product for over 1 hour;

Please note that the maximum tension achievable will depend upon the type and size of cable due to friction factor limitations, and the general lay conditions.



Basic Specifications:

Height:	2.0m
Width:	1.5m
Length:	2.7m
Weight:	3.5Te
Control Modes:	Auto and Manual
Typical HPU Supplied:	Rig 31 (45kW Closed Loop HPU)
Power Requirements:	HPU Dependent
Length of hoses/data cable between LCE and HPU:	10m (If required this can be lengthened)
Length of data cable between LCE and control desk:	15m (If required this can be lengthened)



**FHP Ltd, Unit BT 96/4,
Fisher Industrial Estate, Fisher Street, Walker,
Newcastle upon Tyne, NE6 4LT**

Tel: 0191 2637272 Fax: 0191 2634016
Web: www.fhpltd.co.uk

Registered in England No. 02044252.